

## **Automated Crop Inspection and Pest Control Using Image Processing**

J.Mahalakshmi<sup>1</sup>, Pg Student, G.Shanthakumari<sup>2</sup>,

<sup>1</sup>*sri Sairam Engineering College, Chennai, India.*

<sup>2</sup>*Asst Professor, Department Of Ece, Sri Sairam Engineering College, Chennai, India.*

---

**ABSTRACT:** Agriculture is the backbone of our country. India is an agricultural country where the most of the population depends on agriculture. Research in agriculture is aimed towards increasing productivity and profit. There are several automated systems available in literature, which are developed for irrigation control and environmental monitoring in the field. However, it is essential to monitor the plant growth stage by stage and take decisions accordingly. In addition to monitoring the environmental parameters such as pH, moisture content and temperature, it is inevitable to identify the onset of plant diseases too. It is the key to prevent the losses in yield and quantity of agricultural product. Plant disease identification by continuous visual monitoring is very difficult task to farmers and at the same time it is less accurate and can be done in limited areas. Hence this projects aims at developing an image processing algorithm to identify the diseases in rice plant. Rice blast disease occurring in rice plant is due to magnaporthe grisea and this disease also occurs in wheat, rye, barley, pearl and millet. Due to rice blast disease, 60 million people are affected in 85 countries worldwide. Image processing technique is adopted as it is more accurate. Early disease detection can increase the crop production by inducing proper pesticide usage.

---

### **I. INTRODUCTION**

Hardware prototype of the proposed system will be developed by using Arm processor. The agricultural sector plays an important role in economic development by providing rural employment. Management of paddy plant from early stage to nature harvest state increases the yield. Paddy is one of the nation's most important products as it is considered as to be one of India stable food and cereal crops and because of that, many efforts have taken to ensure its safety, one of them is monitoring of paddy plant. Paddy plants are affected by various fungi. This work focus on recognizing paddy plant disease namely rice blast disease. The proper detection and recognizing of the disease is very important for applying fertilizer. There will be a decline in the production, if the diseases are not recognized at early stage. The main goal of this work is to build up an image recognition system that identifies the paddy plant diseases affecting the cultivation of paddy. The system also monitors the environmental parameters. The paddy leaf image is given as input image. To reduce correlated colour information, convert RGB image to gray scale. Morphological process consists of erosion, dilation, opening and closing operation. Apply morphological opening operation on a gray scale paddy leaf image to reduce the small noise. Morphological closing operation is used to smooth the leaf structure and to fuse the narrow breaks.

From the process, it leads to thresholding calculation. In this image segmentation is done here. After this process, the infected region of the paddy leaf is found.

**There are four main steps used for the detection of plant leaf diseases:**

- 1) RGB image acquisition.
- 2) Convert the input image into gray scale
- 3) Segment the component
- 4) Obtain the useful segment

In Image Processing, whose goal is to investigate the history of an image using passive approaches, has emerged as a possible way to solve the above crisis. The basic idea underlying Image Processing is that most, if not all, image processing tools leave some (usually imperceptible) traces into the processed image, and hence the presence of these traces can be investigated in order to understand whether the image has undergone some kind of processing or not. In the last years many algorithms for detecting different kinds of traces have been proposed which usually extract a set of features from the image and use them to classify the content as exposing the trace or not. Computerized analysis of medical images is gaining importance day by day, as it often produces higher sensitivity irrespective of experience of the analyst. For this reason various image analysis techniques are used for automatic detection of various diseases in Paddy. Various methods have been developed for detection

---

of exudates. These include thresholding and edge detection based techniques, FCM based approach, gray level variation based approach, multilayer perception based approach. Two principal research paths evolve under the name of Digital Image Processing. The first one includes methods that attempt at answering question, was the image captured by the device it is claimed to be acquired with? By performing some kind of ballistic analysis to identify the device that captured the image or at least to determine which devices did not capture it.

The history of a digital image can be represented as a composition of several steps, collected into three main phases: acquisition, coding, and editing. These methods will be collected in the following under the common name of image source device identification techniques. The second group of methods aims instead at exposing traces of semantic manipulation (i.e. forgeries) by studying inconsistencies in natural image statistics.

Digital image processing allows one to enhance image features of interest while attenuating detail irrelevant to a given application, and then extract useful information about the scene from the enhanced image. This introduction is a practical guide to the challenges, and the hardware and algorithms used to meet them. Images are produced by a variety of physical devices. Such processing is called image enhancement; processing by an observer to extract information is called image analysis. Enhancement and analysis are distinguished by their output, images Vs scene information, and by the challenges faced and methods employed. Image enhancement has been done by chemical, optical, and electronic means, while analysis has been done mostly by humans and electronically. Digital image processing is a subset of the electronic domain wherein the image is converted to an array of small integers called *pixels*, representing a physical quantity such as scene radiance stored in a digital memory, and processed by computer or other digital hardware. Digital image processing, either as enhancement for human observers or performing autonomous analysis, offers advantages in cost, speed, and flexibility, and with the rapidly falling price and rising performance of personal computers it has become the dominant method in use

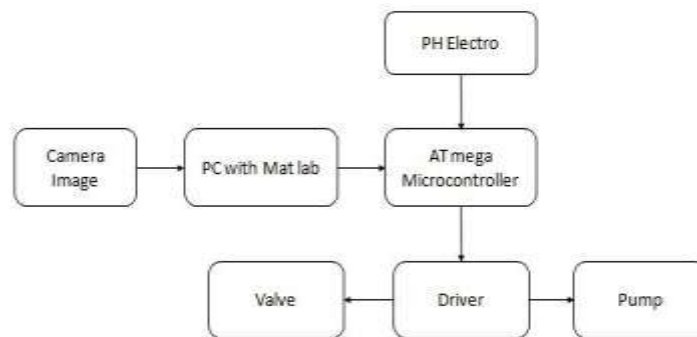


Fig 1. Block Diagram

**Paddy:** A paddy field is a flooded parcel of arable land used for rowing semiaquatic rice. Paddy cultivation should not be confused with cultivation of deep water rice, which is grown in flooded conditions with water more than 50 cm (20 in) deep for at least a month. Genetic evidence shows that all forms of paddy rice, both indica and japonica, spring from a domestication of the wild rice *Oryza rufipogon* that first occurred 8,200– 13,500 years ago South of the Yangtze River in present-day China.

However, the domesticated indica subspecies currently appears to be a product of the introgression of favorable alleles from japonica at a later date, so that there are possibly several events of cultivation and domestication. Paddy fields are the typical feature of rice farming in east, south and southeast Asia. Fields can be built into steep hillsides as terraces and adjacent to depressed or steeply sloped features such as rivers or marshes. They can require a great deal of labor and materials to create, and need large quantities of water for irrigation. Oxen and water buffalo, adapted for life in wetlands, are important working animals used extensively in paddy field farming.

During the 20th century, paddy-field farming became the dominant form of growing rice. Hill tribes of Thailand still cultivate dry-soil varieties called upland rice. Paddy field farming is practiced in Cambodia, Bangladesh, China, Taiwan, India, Indonesia, Iran, Japan, North Korea, South Korea, Malaysia, Myanmar, Nepal, Pakistan, the Philippines, Sri Lanka, Thailand, Vietnam, and Laos, Northern Italy, the Camargue in France, the Artibonite Valley in Haiti, and Sacramento Valley in California. Paddy fields are a major source of atmospheric methane and have been estimated to contribute in the range of 50 to 100 million tonnes of the gas per annum. Studies have shown that this can be significantly reduced while also boosting crop yield by draining the paddies to allow the soil to aerate to interrupt methane production, Studies have also shown the variability in assessment of methane emission using local, regional and global factors and calling for better inventorisation based on micro level data.

**Table 1** Types of Diseases

Nursery diseases	Main field diseases
Blast –Pyricularia grisea(P.oryzae)	Brown spot – Helminthosporium oryzae
Bacterial Leaf Blight –Xanthomonas oryzae pv.oryzae	–Sheath Rot- Sarocladium oryzae
Rice tungro disease –Rice tungro virus(RTSV, RTBV)	–Sheath Blight – Rhizoctonia Solani
	–False Smut – Ustilaginoidea virens
	–Grain discolouration – fungal complex
	–Leaf streak – Xanthomonas oryzae pv.oryzicola

### Grayscale Process

In photography and computing, a grayscale or grayscale digital image is an image in which the value of each pixel is a single sample, that is, it carries only intensity information. Images of this sort, also known as black-and-white, are composed exclusively of shades of gray, varying from black at the weakest intensity to white at the strongest. Grayscale images are distinct from one-bit bi-tonal black-and-white images, which in the context of computer imaging are images with only the two colours, black, and white (also called bi-level or binary images). Grayscale images have many shades of gray in between.

Grayscale images are often the result of measuring the intensity of light at each pixel in a single band of the electromagnetic spectrum (e.g. infrared, visible light, ultraviolet, etc.), and in such cases they are monochromatic proper when only a given frequency is captured. But also they can be synthesized from a full colour image; see the section about converting to grayscale. The intensity of a pixel is expressed within a given range between a minimum and a maximum, inclusive. This range is represented in an abstract way as a range from 0 (total absence, black) and 1 (total presence, white), with any fractional values in between. This notation is used in academic papers, but this does not define what "black" or "white" is in terms of colorimetric.

Another convention is to employ percentages, so the scale is then from 0% to 100%. This is used for a more intuitive approach, but if only integer values are used, the range encompasses a total of only 101 intensities, which are insufficient to represent a broad gradient of gray. Also, the percentile notation is used in printing to denote how much ink is employed in half toning, but then the scale is reversed, being 0% the paper white (no ink) and 100% a solid black (full ink). In computing, although the grayscale can be computed through rational numbers, image pixels are stored in binary, quantized form. Some early grayscale monitors can only show up to sixteen (4-bit) different shades, but today grayscale images (as photographs) intended for visual display (both on screen and printed) are commonly stored with 8 bits per sampled pixel, which allows 256 different intensities (i.e., shades of gray) to be recorded, typically on a non-linear scale. Technical uses (e.g. in medical imaging or remote sensing applications) often require more levels, to make full use of the sensor accuracy (typically 10 or 12 bits per sample) and to guard against round off errors in computations. The TIFF and the PNG (among other) image file formats support 16-bit grayscale natively, although browsers and many imaging programs tend to ignore the low order 8 bits of each pixel. No matter what pixel depth is used, the binary representations assume that 0 is black and the maximum value (255 at 8 sbpp, 65,535 at 16 bpp, etc.) is white, if not otherwise noted. Conversion of a color image to grayscale is not unique; different weighting of the color channels effectively represent the effect of shooting black-and-white film with different-colored photographic filters on the cameras.

- $I = \text{rgb2gray}(\text{RGB})$
- $\text{new map} = \text{rgb2gray}(\text{map})$

$I = \text{rgb2gray}(\text{RGB})$  converts the truecolor image RGB to the grayscale intensity image I. The `rgb2gray` function converts RGB images to grayscale by eliminating the hue and saturation information while retaining the luminance. If you have Parallel Computing Toolbox installed, `rgb2gray` can perform this conversion on a GPU. `Newmap = rgb2gray(map)` returns a grayscale colormap equivalent to `map`

A common strategy is to use the principles of photometry or, more broadly colorimetry to match the luminance of the grayscale image to the luminance of the original color image. This also ensures that both

images will have the same absolute luminance, as can be measured in its SI units of candelas per square meter, in any given area of the image, given equal whitepoints. In addition, matching luminance provides matching perceptual lightness measures, such as  $L^*$  (as in the 1976 CIE Lab color space) which is determined by the luminance  $Y$  (as in the CIE 1931 XYZ color space).

To convert a color from a colorspace based on an RGB color model to a grayscale representation of its luminance, weighted sums must be calculated in a linear RGB space, that is, after the gamma compression function has been removed first via gamma expansion.

For the sRGB color space, gamma expansion is defined as,

$$C_{\text{linear}} = \begin{cases} \frac{C_{\text{srgb}}}{12.92}, & C_{\text{srgb}} \leq 0.04045 \\ \left( \frac{C_{\text{srgb}} + 0.055}{1.055} \right)^{2.4}, & C_{\text{srgb}} > 0.04045 \end{cases}$$

Where  $C_{\text{srgb}}$  represents any of the three gamma-compressed sRGB primaries ( $R_{\text{srgb}}$ ,  $G_{\text{srgb}}$ , and  $B_{\text{srgb}}$ , each in range [0,1]) and  $C_{\text{linear}}$  is the corresponding linear-intensity value ( $R$ ,  $G$ , and  $B$ , also in range [0,1]).

Then, luminance is calculated as a weighted sum of the three linear-intensity values. The sRGB color space is defined in terms of the CIE 1931 linear luminance  $Y$ , which is given by,

$$Y = 0.2126R + 0.7152G + 0.0722B.$$

The coefficients represent the measured intensity perception of typical trichromat humans, depending on the primaries being used; in particular, human vision is most sensitive to green and least sensitive to blue. To encode grayscale intensity in linear RGB, each of the three primaries can be set to equal the calculated linear luminance  $Y$  (replacing  $R, G, B$  by  $Y, Y, Y$  to get this linear grayscale). Linear luminance typically needs to be gamma compressed to get back to a conventional non-linear representation.

For sRGB, each of its three primaries is then set to the same gamma-compressed  $Y_{\text{srgb}}$  given by the inverse of the gamma expansion above as,

$$Y_{\text{srgb}} = \begin{cases} 12.92 Y, & Y \leq 0.0031308 \\ 1.055 Y^{1/2.4} - 0.055, & Y > 0.0031308. \end{cases}$$

Web browsers and other software that recognizes sRGB images will typically produce the same rendering for a such a grayscale image as it would for an sRGB image having the same values in all three color channels.



**Fig 2.** Gray scale image

## II. Morphological

### Transformations

Morphology is a technique of image processing based on shape and form of objects. Morphological methods apply a structuring element to an input image, creating an output image at the same size. The value of

each pixel in the input image is based on a comparison of the corresponding pixel in the input image with its neighbours. By choosing the size and shape of the neighbour, you can construct a morphological operation that is sensitive to specific shapes in the input image.

Morphological operations such as erosion, dilation, opening, and closing. Often combinations of these operations are used to perform morphological image analysis. There are many useful operators defined in mathematical morphology. They are dilation, erosion, opening and closing. Morphological operations apply structuring elements to an input image, creating an output image of the same size. Irrespective of the size of the structuring element, the origin is located at its centre. Morphological opening is  $(\epsilon \circ \delta) B f x m g$  and Morphological closing is,

$$A \oplus B = \bigcup_{b \in B} A_b$$

$$\gamma_{\mu B}(f)(x) = \delta_{\mu B}(\epsilon_{\mu B}(f))(x)$$

$$\phi_{\mu B}(f)(x) = \epsilon_{\mu B}(\delta_{\mu B}(f))(x)$$

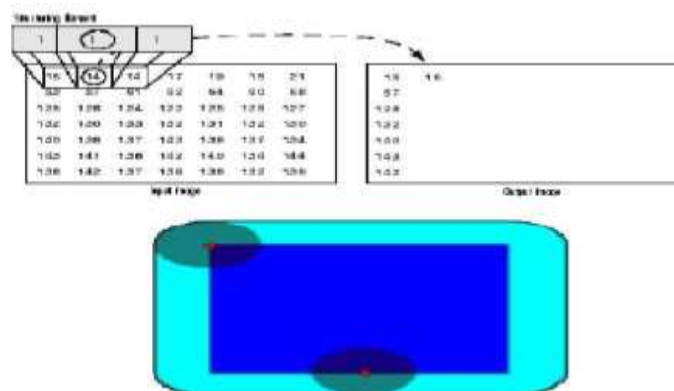
Where  $m$  a homothetic parameter, size is  $m$  means a square of  $(2m + 1) \times (2m + 1)$  pixels.  $B$  is the structuring element of size  $3 \times 3$  (here  $m = 1$ ).

Dilation is a transformation that produces an image that is the same shape as the original, but is a different size. Dilation stretches or shrinks the original. Dilation increases the valleys and enlarges the width of maximum regions, so it can remove negative impulsive noises but do little on positives ones. The dilation of  $A$  by the structuring element  $B$  is defined by:

If  $B$  has a centre on the origin, as before, then the dilation of  $A$  by  $B$  can be understood as the locus of the points covered by  $B$  when the centre of  $B$  moves inside  $A$ . Dilation of image  $f$  by structuring element  $s$  is given by  $f \hat{\ast} s$ . The structuring element  $s$  is positioned with its origin at  $(x, y)$  and the new pixel value is determined using the rule:

$$g(x, y) = \begin{cases} 1 & \text{if } s \text{ hits } f \\ 0 & \text{otherwise} \end{cases}$$

The following Fig illustrates the morphological dilation of a gray scale image. Note how the structuring element defines the neighbourhood of the pixel of interest, which is circled. The dilation function applies the appropriate rule to the pixels in the neighbourhood and assigns a value to the corresponding pixel in the output image. In the Fig, the morphological dilation function sets the value of the output pixel to 16 because it is the maximum value of all the pixels in the input pixel's neighbourhood defined by the structuring element is on. Easiest way to describe it is to imagine the same fax/text is written with a thicker pen. In a binary image, if any of the pixels is set to the value 1, the output pixel is set to 1.



**Fig 3. Dilation Process**

It is used to reduce objects in the image and known that erosion reduces the peaks and enlarges the widths of minimum regions, so it can remove positive noises but affect negative impulsive noises little.

The erosion of the dark blue square resulting in light blue square. The erosion of the binary image  $A$  by the structuring element  $B$  is defined by:

$$A \ominus B = \{z \in E \mid B_z \subseteq A\}$$

In binary image, if any of the pixels is set to 0, the output pixel is set to 0.

Erosion of image  $f$  by structuring element  $s$  is given by  $f \ominus s$ . The structuring element  $s$  is positioned with its origin at  $(x, y)$  and the new pixel value is determined using the rule:

$$g(x, y) = \begin{cases} 1 & \text{if } s \text{ hits } f \\ 0 & \text{otherwise} \end{cases}$$

In the above equation fit means all *on pixel* in the structuring element covers an *on pixel* in the image. The following Fig illustrates the morphological erosion of a gray scale image. Note how the structuring element defines the neighbourhood of the pixel of interest, which is circled. The dilation function applies the appropriate rule to the pixels in the neighbourhood and assigns a value to the corresponding pixel in the output image. In the Fig, the morphological erosion function sets the value of the output pixel to 14. The opening of  $A$  by  $B$  is obtained by the erosion of  $A$  by  $B$ , followed by dilation of the resulting image by  $B$ :

$$A \circ B = (A \ominus B) \oplus B$$

In the case of the square of side 10, and a disc of radius 2 as the structuring element, the opening is a square of side 10 with rounded corners, where the corner radius is 2. The sharp edges start to disappear. Opening of an image is erosion followed by dilation with the same structuring element.

Closing of an image is the reverse of opening operation.

The closing of  $A$  by  $B$  is obtained by the dilation of  $A$  by  $B$ , followed by erosion of the resulting structure by  $B$ :

$$A \bullet B = (A \oplus B) \ominus B$$

An edge in an image is a boundary or contour at which a significant change occurs in some physical aspect of an image, such as the surface reflectance, illumination. The first method proposed is the block analysis where the entire image is split into a number of blocks and each block is enhanced individually. The next proposed method is the erosiondilation method which is similar to block analysis but uses morphological operations (erosion and dilation) for the entire image rather than splitting into blocks. All these methods were initially applied for the gray level images and later were extended to colour images by splitting the colour image into its respective R, G and B components, individually enhancing them and concatenating them to yield the enhanced image. All the above mentioned techniques operate on the image in the spatial domain. The final method is the DCT where the frequency domain is used. Here we scale the DC coefficients of the image after DCT has been taken. The DC coefficient is adjusted as it contains the maximum information. Here, we move from RGB domain to YCbCr domain for processing and in YCbCr, to adjust (scale) the DC coefficient, i.e. Y (0, 0). The image is converted from RGB to YCbCr domain because if the image is enhanced without converting, there is a good chance that it may yield an undesired output image. The enhancement of images is done using the log operator. This is taken because it avoids abrupt changes in lighting. For example, if 2 adjacent pixel values are 10 and 100, their difference in normal scale is 90. But in the logarithmic scale, this difference reduces to just 1, thus providing a perfect platform for image enhancement. Many applications to get clear and useful information from an image which may have been picturaized in different conditions like poor lighting or bright lighting, moving or still etc. This Section deals with background analysis of the image by blocks. In this project,  $D$  represent the digital space under study.

For each analyzed block, maximum ( $iM$ ) and minimum ( $im$ ) values are used to determine the background measures.  $\tau_i$  is used to select the background parameters. Background parameters lie between clear ( $f > \tau_i$ ) and dark ( $f \leq \tau_i$ ) intensity levels. If ( $f \leq \tau_i$ ) is the dark region then background parameters takes the maximum intensity levels ( $iM$ ) then ( $f > \tau_i$ ) is the clear region, background parameters takes the minimum intensity levels ( $im$ ). Enhance images are we get after applying the below equation, and

$$\Gamma_{\tau_i}(f) = \begin{cases} k_{\tau_i(x)} \log(f+1) + \delta_{\mu}(f)(x), & f \leq \tau(x) \\ k_{\tau_i(x)} \log(f+1) + \varepsilon_{\mu}(f)(x), & \text{Otherwise} \end{cases}$$

Let  $f$  be the original image which is subdivided into number of blocks with each block is the sub-image of the original image. For each and every block  $n$ , the minimum intensity  $im$  and maximum intensity  $iM$  values are calculated  $im$  and  $iM$  values are

used to find the background criteria  $\tau_i$  in the following way:

It is used as a threshold between clear ( $f > \tau_i$ ) and dark

( $f = \tau_i$ ) intensity levels.

Based on the value of  $i$ , the background parameter is decided for each analyzed block. Correspondingly the contrast enhancement is expressed as follows:

$$\Gamma_{\tau_i}(f) = \begin{cases} k_i \log(f+1) + M_i, & f \leq \tau_i \\ k_i \log(f+1) + m_i, & \text{Otherwise} \end{cases}$$

It is clear that the background parameter entirely is dependent up on The background criteria  $\tau_i$  value. For  $f = \tau_i$ , the background parameter takes the maximum intensity value  $iM$  within the analyzed block, and the minimum intensity value  $im$  otherwise. In order to avoid indetermination condition, unit was added to the logarithmic function.

$$\text{Where } k_i = \frac{255 - m_i^*}{\log(256)} \quad \forall i = 1, 2, \dots, n$$

$$\text{With } m_i^* = \begin{cases} m_i, & f \leq \tau_i \\ M_i, & f \geq \tau_i \end{cases}$$

The more is the number of blocks; the better will be quality of the enhanced image As the size of the structuring element increases it is hard to preserve the image as blurring and contouring effects are severe. The results are best obtained by keeping the size of the structuring element as 2 ( $\mu=2$ ). Sample input (left half of the image) and output image (right half) for block analysis is shown below:

$$\tau_i = \frac{m_i + M_i}{2} \quad \forall i = 1, 2, \dots, n$$



**Fig 4.** Block Analysis for Gray level images

This method is similar to block analysis in many ways; apart from the fact that the manipulation is done on the image as a whole rather than partitioning it into blocks. Firstly minimum  $I_{\min}(x)$  and maximum intensity  $I_{\max}(x)$  contained in a structuring element (B) of elemental size  $3 \times 3$  is calculated. The above obtained values are used to find the background criteria  $i^{\tau}$  as described below

$$\tau(x) = \frac{I_{\min}(x) + I_{\max}(x)}{2}$$

Where  $\min I(x)$  and  $\max I(x)$  corresponds to morphological erosion and dilation respectively. Therefore,

$$\tau(x) = \frac{\varepsilon_{\mu}(f)(x) + \delta_{\mu}(f)(x)}{2}$$

In this way the contrast operator can be described as in equations. By employing Erosion-Dilation method we obtain a better local analysis of the image for detecting the background criteria than the previously used method of Blocks. This is because the structuring element  $\mu B$  permits the analysis of eight boring pixels at each point in the image. By increasing the size of the structuring element more pixels will be taken into account for finding the background criteria. It can be easily visualized that several characteristics that are not visible at first sight appear in the enhanced images. The trouble with this method is that morphological erosion or dilation when used with large size of  $\mu$  to reveal the background, undesired values may be generated. In general it is desirable to filter an image without generating any new components. The transformation function which enables to eliminate unnecessary parts without affecting other regions of the image is defined in mathematical morphology which is termed as transformation by reconstruction. We go for opening by reconstruction because it restores the original shape of the objects in the image that remain after erosion as it touches the regional minima and merges the regional maxima. This particular characteristic allows the modification of the altitude of regional maxima when the size of the structuring element increases thereby aiding in detection of the background criteria as follows:

$$\tau(x) = \tilde{\gamma}_{\mu B}(f)(x)$$

Where opening by reconstruction is expressed as

$$\tilde{\gamma}_{\mu B}(f)(x) = \lim_{n \rightarrow \infty} \delta_f^n(\varepsilon_{\mu B}(f))(x)$$

It can be observed from the above equation that opening by reconstruction first erodes the input image and uses it as a marker. Here marker image is defined because this is the image which contains the starting or seed locations. For example, here the eroded image can be used as the marker. Then dilation of the eroded image i.e. marker is performed iteratively until stability is achieved. Image background obtained from the erosion of the opening by reconstruction.

Median filtering is a nonlinear process useful in reducing impulsive, or salt-and-pepper noise. It is also useful in preserving edges in an image while reducing random noise. For example, suppose the pixel values within a window are 56, 55, 10 and 15, and the pixel being processed has a value of 55. The output of the median filtering the current pixel location is 10, which is the median of the five values. Like median filtering, out-range pixel smoothing is a nonlinear operation and is useful in reducing salt-and-pepper noise. If the difference between the average and the value of the pixel processed is above some threshold, then the current pixel value is replaced by the average. Otherwise, the value is not affected. Because it is difficult to determine the best parameter values in advance, it may be useful to process an image using several different threshold values and window sizes and select the best result.

Detecting edges is very useful in a no of contexts. For example in a typical image understanding task such as object identification, an essential step is to segment an image into different regions corresponded to different objects in the scene. Edge detection is the 1<sup>st</sup> step in image segmentation. Another example is in the development of a low bit rate image coding system in which we can code only edges. It is well known that an image that consists of only edges is highly intelligible. The significance of a physical change in an image depends on the application. An intensity change that would be classified as an edge in some application might not be considered an edge in other application.



### Thresholding Calculation

The simplest method of image segmentation is called the thresholding method. This method is based on a clip-level (or a threshold value) to turn a gray scale image into a binary image. The key of this method is to select the threshold value (or values when multiple-levels are selected). Several popular methods are used in industry including the maximum entropy method, Otsu's method (maximum variance), and k-means clustering. [Threshold > Strip of wood or stone forming the bottom of a doorway and crossed in entering a house or room. A level or point at which something starts or ceases to happen or come into effect. The level at which one starts to feel or react to something.]. The purpose of thresholding is to extract those pixels from some image which represent an object (either text or other line image data such as graphs, maps). Though the information is binary the pixels represent a range of intensities. Thus the objective of binarization is to mark pixels that belong to true foreground regions with a single intensity and background regions with different intensities. Thresholding is the transformation of an input image  $f$  to an output (segmented). Binary image  $g$  as follows

$$g(i,j)=1 \text{ for } f(i,j) \geq T.$$
$$g(i,j)=0 \text{ for } f(i,j) < T.$$

Where  $T$  is the thresholding,  $g(i,j)=1$  for image elements of objects, and  $g(i,j)=0$  for image elements of background. If objects do not touch each other, and if their gray-levels are clearly distinct from background gray-levels, thresholding is suitable segmentation method. Correct threshold selection is crucial for successful threshold segmentation, this selection can be determined interactively or it can be the result of some threshold detection method. Only under very unusual circumstances can threshold be successful using a single threshold for whole image (global thresholding) since even in very simple images there are likely to be gray-level variations in objects and background. This variation may be due to non-uniform lighting, no uniform input device parameters or a number of other factors.

Segmentation using variable thresholds (adaptive thresholding), in which the threshold value varies over the image as a function of local image characteristics. A global threshold is determined from the whole image  $f$ :  $T=T(f)$ . Local Thresholds are position dependent  $T=T(f, \cdot)$ , Where  $\cdot$  is that image part in which the threshold is determined. One option is to divide the image  $f$  into sub images and determine a threshold independently in each sub images, it can be interpolated from thresholds determined in neighbouring sub images. Each sub images is then processed with respect to its local threshold. Basic thresholding as defined has many modifications. One possibility is to segment an image into regions of pixels with gray-levels from a set  $D$  and into background otherwise (band thresholding):

$$g(i,j)=1 \text{ for } f(i,j) \in D$$
$$g(i,j)=0 \text{ otherwise.}$$

### III. Results & Measurements

There are four main steps used for the detection of plant leaf diseases:

1. RGB image acquisition.
2. Convert the input image into gray scale
3. segment the component
4. obtain the useful segment

#### RGB Image Acquisition

The diseased paddy image is used as input



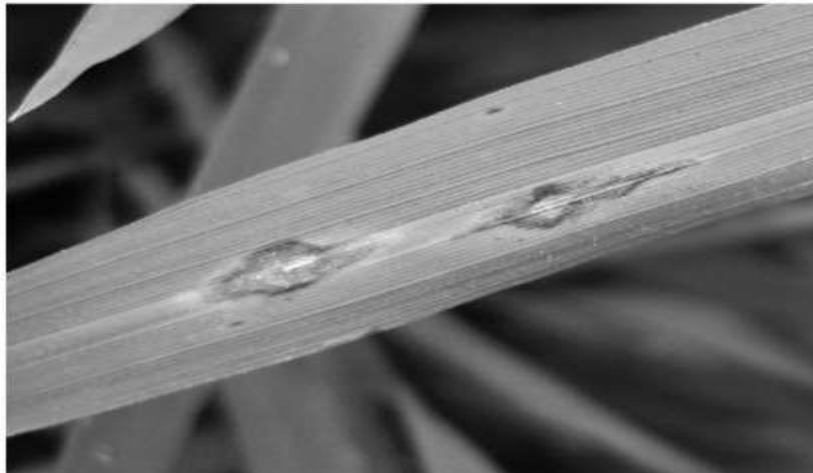
Sheath Blight

Brown spot

Fig 5. Diseased paddy

**Convert the input image into gray scale** Input colour images have primary colours Red, Green, Blue. It is not possible to implement applications using RGB because of the range,(0-255).

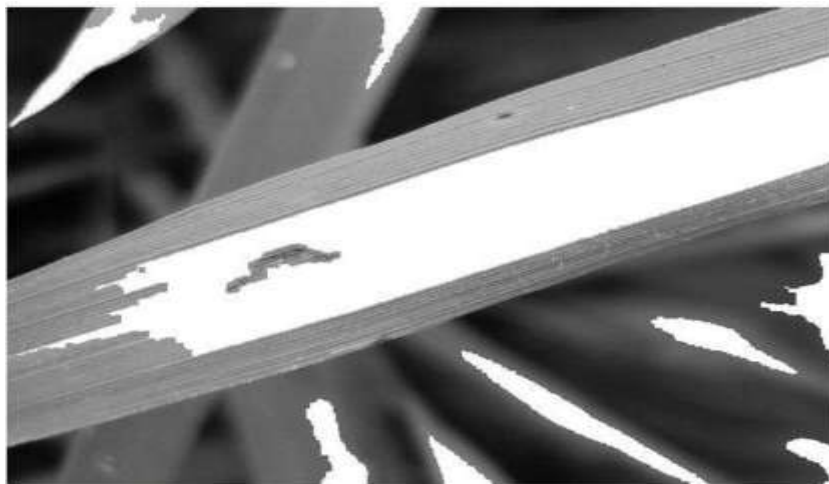
Hence they convert the RGB images into the LAB images.



**Fig 6.** Gray scale image

#### **Segment the Component**

Image segmentation is the process of partitioning a digital image into multiple segments (sets of pixels, also known as super-pixels). The goal of segmentation is to simplify and/or change the representation of an image into something that is more meaningful and easier to analyze. Image segmentation is typically used to locate objects and boundaries (lines, curves, etc.) in images. More precisely, image segmentation is the process of assigning a label to every pixel in an image such that pixels with the same label share certain characteristics. After segmentation of the gray scaled image, required infected region of the paddy leaf.



**Fig 7.** Infected Leaf

#### **IV. CONCLUSION**

There are several automated systems available in literature, which are developed for irrigation control and environmental monitoring in the field. However, it is essential to monitor the plant growth stage by stage and take decisions accordingly. In addition to monitoring the environmental parameters such as ph, moisture content is essential. In olden days only by human perception they have identified the problems and they faced many issues and its difficult. Various paddy diseases are identified using image processing which is accurate and easy for perception.

**REFERENCES**

- [1]. Ajinkya Paikekari, Vrushali Ghule, Rani Meshram, V.B. Raskar, "Weed Detection using Image processing", International Research Journal of Engineering and Technology, 2016, pp 1220-1222.
- [2]. Jayamala.K.Patit, Rajkumar,"Advances in Image Processing for detection of plant diseases", Journal of Advanced Bio Informatics Applications and Research, 2011, pp 135-141.
- [3]. Mrs. Latha, A Poojith, B V Amarnath Reddy, G Vittal Kumar, " Image Processing in Agriculture", International Journal of Innovative Research in Electrical, Electrical, Instrumentation and Control Engineering, 2014, pp 1562-1565.
- [4]. J.S.Saijis, R.Rastogi, V.K.Chadda, "Application of Image processing in BiologyandAgriculture".BARC Newsletter, 2014
- [5]. P.Usha,V.Maheswari, Dr.V.Nandagopal, "Design and Implementation of Seeding Agricultural Robot", Journal of Innovative Research and Solutions, 2015, 138-143.